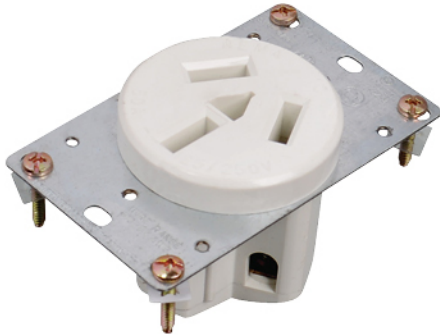


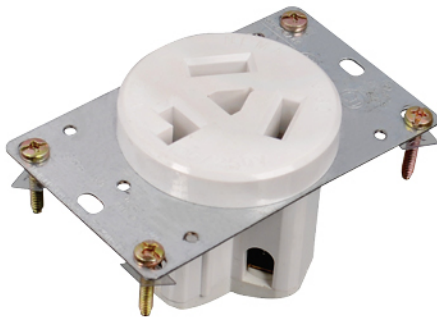
Straight Blade Power Receptacle

UL Listed, 50 Amp, 125/250 Volt, NEMA 10-30R, 3P, 3W, Flush Mtg Receptacle, Non-Grounding, Side Wired, Steel Strap, Heavy duty plastic construction



LD-3201 50A

UL Listed, 30 Amp, 125/250 Volt, NEMA 10-30R, 3P, 3W, Flush Mtg Receptacle, Non-Grounding, Side Wired, Steel Strap; Heavy duty plastic construction



LD-3205 30A

Electrical Specifications

Dielectric Voltage Withstands 2000V per UL498;
Current Limiting: Full Rated Current;
Temperature Rise: Max 30C after 50 cyc OL at 150 pct rated current

Mechanical Specifications

Terminal ID: Brass-Hot, Green-Ground,
Terminal Accom.: White-Neutral; Up to 4 AWG

Material Specifications

Face & body Material: Heavy duty plastic;
Product ID: Ratings are permanently marked on device;
Line Contacts: Brass Double-Wipe;
Yoke: Zinc-Plated Steel

Environmental Specifications

Flammability: Rated V-2 per UL94;
Operating Temp.: -40C to 60C

AC Horsepower Ratings

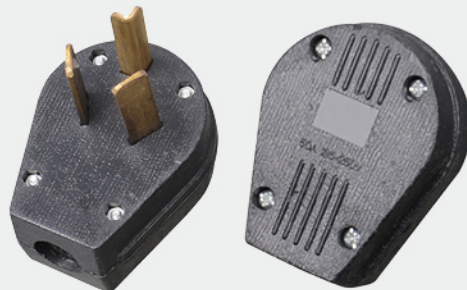
At Rated Voltage: 2 HP

Standards and Certifications: UL498

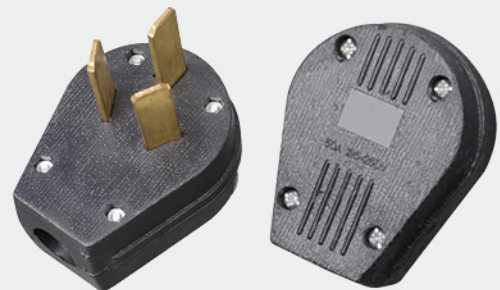
Receptacle & Plug



LD-2122



LD-3714



LD-3715